



RECP #: 752661


RECORDED 5/8/2019 AT 1:11 PM BK# 2620 PG# 1703
Debra K. Lee, CLERK OF LARAMIE COUNTY, WY PAGE 1 OF 1

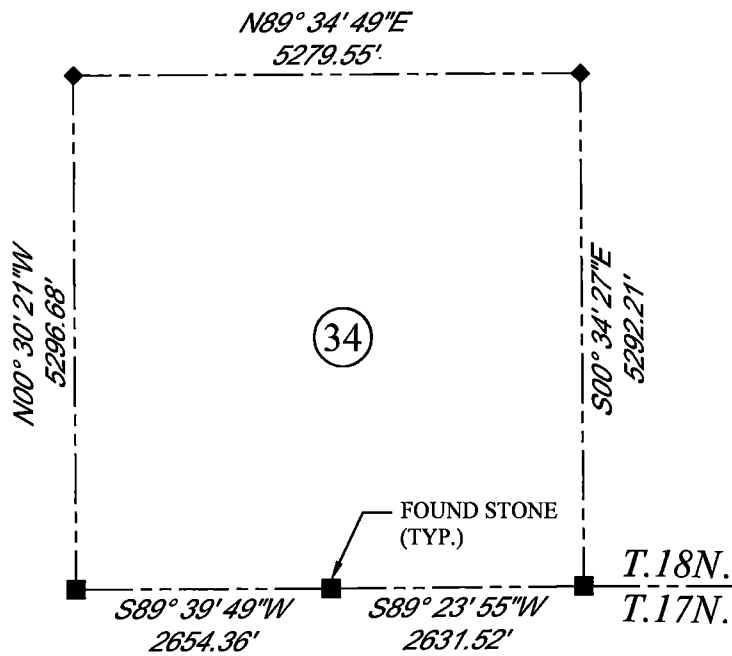
STATE OF WYOMING CORNER RECORD

(In compliance with the CORNER PERPETUATION AND FILING ACT, Wyoming Statutes, 1997 Section 33-29-140, et. seq., and the Rules and Regulations of the Board of Registrations for Professional Engineers and Professional Land Surveyors)

NORTH QUARTER CORNER SECTION 3, T.17 N., R. 63 W., 6TH P.M., LARAMIE COUNTY, WYOMING

GLO: SET A SANDSTONE 18X8X5, 12 IN. DEEP MARKED 1/4 ON THE NORTH EDGE FOR 1/4 SEC. CORNER.
FOUND: BROKEN SANDSTONE ON SIDE NOT SET. NO MARKINGS FOUND.


SCALE: 1" = 2000'
NORTH DETERMINED BY
G.P.S OBSERVATIONS



LEGEND:

- FOUND BLM CAP
- FOUND USFS CAP
- FOUND STONE
- FOUND PRIVATE MONUMENT
- ◇ CALCULATED POSITION
- ▲ SET MONUMENT (LS10245)
- SECTION LINE

DATE OF FIELD WORK: 8/22/2018 OFFICE REFERENCE: MERIDEN

CROSS INDEX DIAGRAM

	1	2	3	4	5	6	7	8	9	10	11	12	13	14	15	16	17	18	19	20	21	22	23	24	25
A																									
B																									
C		6			5			4					3					2							1
D																									
E																									
F																									
G			7			8			9				10					11							12
H																									
J																									
K																									
L			18			17			16				15					14							13
M																									
N																									
O																									
P			19			20			21				22					23							24
Q																									
R																									
S																									
T			30			29			28				27					26							25
U																									
V																									
W																									
X			31			32			33				34					35							36
Y																									
Z																									

WOOD
2615 AVIATION DRIVE
SHERIDAN, WY 82801
PH: 307-675-6400

wood.

THIS CORNER RECORD WAS
PREPARED BY ME OR UNDER
MY DIRECTION AND
SUPERVISION,
SEAL AND SIGNATURE

